



Ministry of Health Uganda

Weekly Epidemiological Bulletin

Highlights of the week

- Nine Ebola cases under follow up in West Africa

Epidemiological week 33 of 2015 [9th – 15th Aug 2015]

Summary Table

Indicator	Week 32 2015	Week 33 2015
% Districts	100	100
Ave % HU	64	65
% Timely reports	80	82
AFP	5 (0)	3 (0)
Rabies	355 (1)	355 (4)
Cholera	0	2 (0)
Dysentery	849 (0)	785 (0)
Guinea Worm	0	0
Malaria	215414 (49)	214325 (54)
Measles	222 (0)	177 (2)
Meningitis	8 (0)	3 (1)
NNT	2 (0)	0
Plague	0	0
Typhoid	1961 (1)	1857 (1)

Completeness of Reporting

The percentage of districts where at least one health facility submitted a weekly surveillance report in week 33 was 100%. Health facilities that reported were 2693 (64%) which is a slight improvement compared to week 32. Fourty districts (35%) achieved the reporting target of ≥80% compared to 32% in week 32. Maracha, Otuke, Yumbe and Zombo achieved 100% reporting.

Timeliness

There was a slight improvement in timely reporting from 80% in week 32 to 82% in week 33 with 66 districts (59%) achieving the timely reporting target of ≥80%.

Disease Outbreaks

Cholera: No new cases were reported this week in Kasese and Arua districts.

Measles: Although there was a 20% reduction in suspected measles cases, two districts have been confirmed to have measles outbreaks i.e. Kiruhura and in Mubende districts. Preliminary data about the measles outbreak in Kiruhura shows that the outbreak started on 6th June 2015 and peaked on 23rd July 2015 (**Figure 1**). Attack rate was highest in Kazo Town Council (**Table 2**). In week 33, eleven districts reported more ≥5 suspected cases but six had 5 suspected cases reported from one sub-county, namely: Kampala, Kalangala, Luwero, Rukungiri, Kyegegwa and Mbarara (**Figure 2**). Plans to have the national measles immunization campaign in September are progressing well, and all districts are conducting micro-planning to target the most at-risk and affected villages in the districts.

Other priority diseases

AFP: Three cases were reported from Lwengo, Otuke and Oyam districts.

Malaria: There was no significant change in the number of malaria cases reported at national level. The number of malaria cases reported from all the ten Northern Uganda districts with a malaria outbreak is still high. Gulu district has the highest number of cases followed by Agago district. Oyam district had the lowest number of cases in week 33 (**Figure 3**).

ACT stock-out: The proportion of facilities reporting stock-out is still on the high side, but steadily declining. In week 33, a total of 564 (24.7%) of the 2,281 facilities reported ACT stock-out. Districts with high ACT Stock-out of above 50% were: Rubirizi, Kyegegwa, Kasese, Kampala, Kibaale, Nebbi and Arua (**Figure 4**).

Maternal deaths: Ten maternal deaths were reported from 8 districts i.e. Kasese (2), Adjumani (2), Kabale (1), Soroti (1), Kanungu (1), Yumbe (1), Maracha (1) and Ntungamo (1).

Typhoid fever: Thirty districts reported more than 20 suspected typhoid fever cases, which is above the alert threshold.

Influenza humans, Uganda: Results based on the weekly sentinel surveillance data from the National Influenza Centre (aggregated with the Makerere University Walter Reed Influenza Project), out of 17 samples submitted, only 1 was positive for Influenza A (H3).

International events of Public Health Concern

Ebola disease in West Africa: As of 23 Aug 2015, there were no new cases reported but follow up of contacts and treatment of cases is ongoing in Guinea (8 cases) and in Sierra Leone (1 case) as shown in Table 1.

Table 1: Number of Ebola cases and (deaths) in three most affected countries in West Africa

	Guinea	Liberia (9 May 2015)	Liberia (20 August 2015)	Sierra Leone 23 Aug 2015
Confirmed	3335 (2075)	Confirmed 3151 (not available)	Confirmed 6 (2)	Confirmed 8697 (3586) no additional cases
Probable	452 (452)	Probable 1879 (not available)	Probable 0 (not available)	Probable 287 (208)
Suspected	5 (Not available)	Suspected 5636 (not available)	Suspected (not available)	Suspected 4557 (158)
Total	3792 (2527) [8 cases in past 21 days]	10 672 (4808)	6 (2) [0 cases in past 21 days]	Total 13 541 (3952) [1 case in past 21 days]

Influenza humans, Nigeria: Delta State Ministry of Agriculture and Natural Resources took proactive steps to avert the spread of the avian influenza disease in the state as it destroyed 750 birds, including chickens and turkeys, which were confirmed to be positive carriers of the disease. However, results for 3100 birds are still being expected from the National Veterinary Research Institute (NVRI) Vom, Jos, Plateau State.

MERS-COV: As of 25 Aug 2015, in Saudi Arabia, there have been a total of: 1162 laboratory-confirmed cases of MERS-CoV infection including 498 deaths, 598 recoveries and 66 currently active cases including 9 on home isolation. In the past 24 hours there have been: 8 newly confirmed cases, 6 new fatalities and 6 new recoveries.

Plague, USA: Plague is a rare, life-threatening, flea-borne zoonosis caused by the bacterium *Yersinia pestis*. Since 1 Apr 2015, a total of 11 cases of human plague have been reported in residents of 6 states: Arizona (2), California (1), Colorado (4), Georgia (1), New Mexico (2), and Oregon (1). The cases in Georgia and California residents have been linked to exposures at or near Yosemite National Park in the southern Sierra Nevada Mountains of California. Nine of the 11 patients were male; median age was 52 years (range = 14-79 years). Three patients aged 16, 52, and 79 years died.

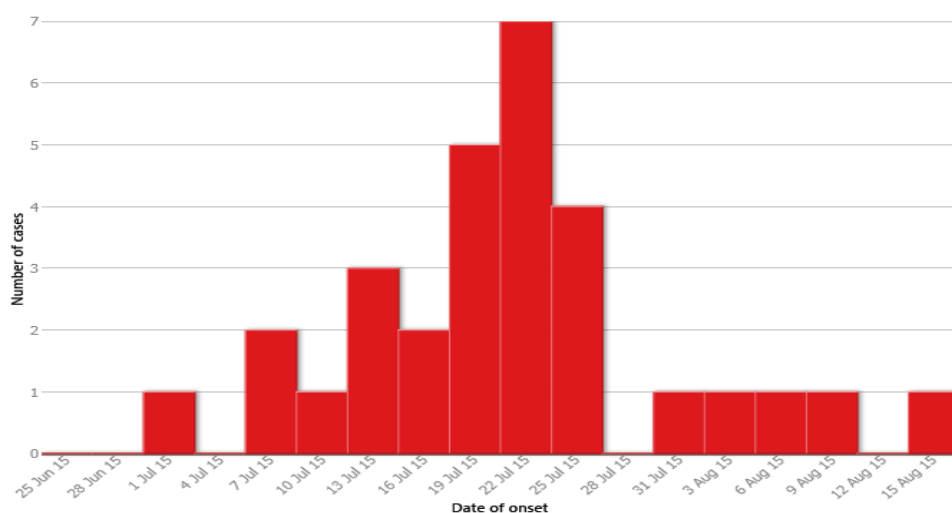


Figure 1: Epidemic curve showing number of measles cases in Kiruhura District by time of onset

Table 2: Measles attack rates by sub-county in Kiruhura District

Sub county	Frequency	Population	AR/10,000
Rwemikoma	2	23,383	0.9
Keshunga	3	25,100	1.2
Kazo	18	29,578	6.1
Kazo Town Council	42	12,742	33

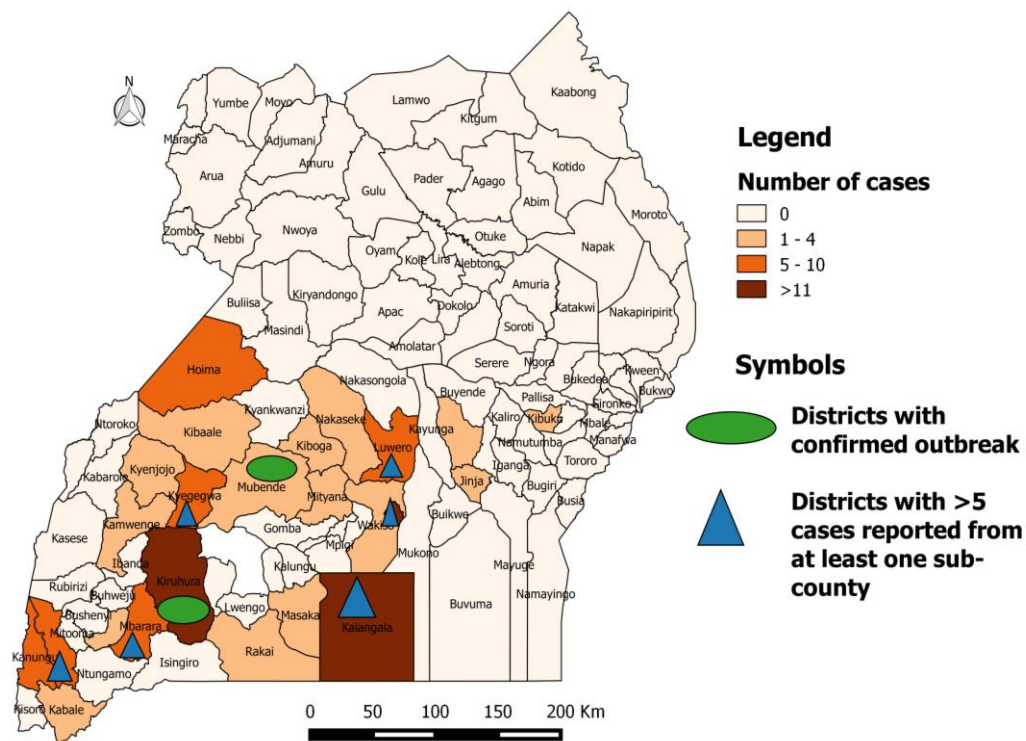


Figure 2: Map showing number of suspected measles cases reported in week 33 by districts

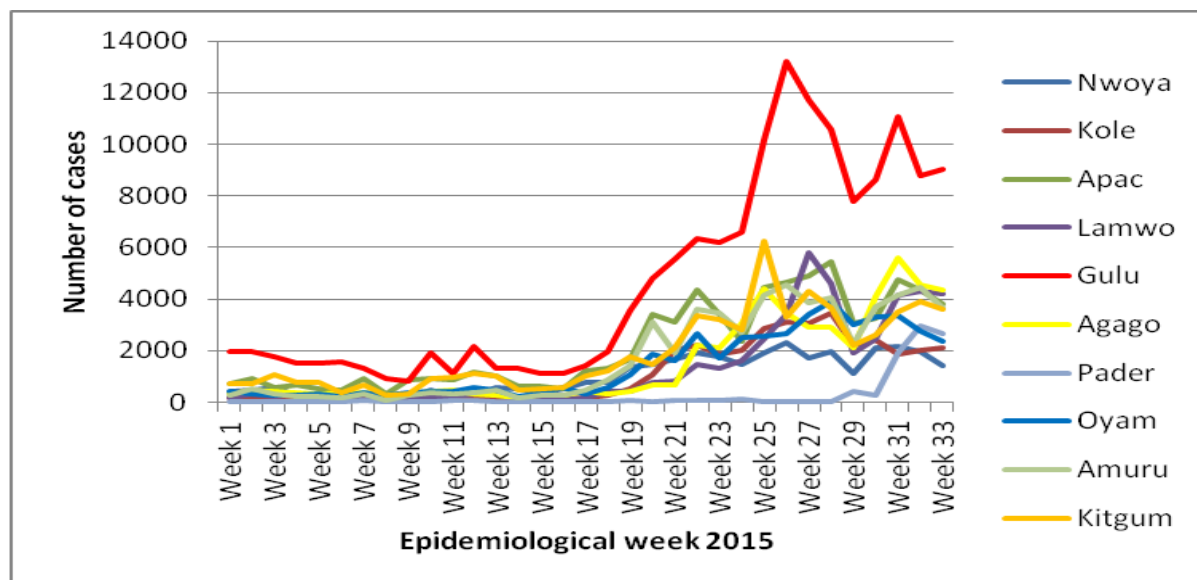


Figure 3: Malaria cases in 10 Northern Uganda districts with an outbreak

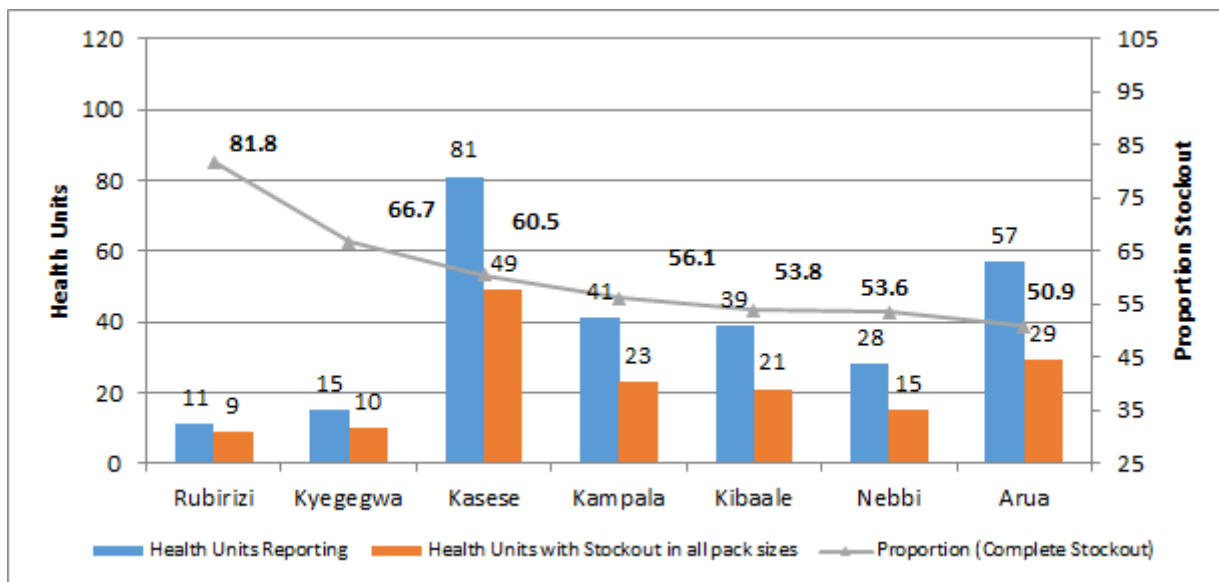


Figure 4: Districts with >50% health facilities reporting ACT stock outs

Editorial: Mr. J. Kissa, Dr.B. Masiira, Dr. M. Musenero, Mr. M. Mugagga, Dr. J. Wamala, Dr. I. Makumbi, Dr. R. Musoke, Dr. J. Sekajugo, Dr. F. Adatu, Dr. C. Okot, Dr. M. Nanyunja, Dr. I. Nabukenya

Founders: Dr. J. Kamugisha (RIP), Dr. J. Wanyana, Dr. M. Lamunu, Dr. C. Mugero, Dr. N Ndayimirigye, Mr. L. Luswa (RIP), Dr. N. Bakyaita, Mr. M. Mugagga

For comments please contact: The Epidemiological Surveillance Division- M.O.H; P.O BOX 7272 Kampala, Tel: 0414-340874/0414-345108;
Email: esd@health.go.ug or esduganda@yahoo.co.uk

Summary table for epidemiological reports received for week ending 15th August 2015

(Numbers in brackets indicate deaths)

District	% of H/U reporting	AFP	Animal bite (Suspected Rabies)	Cholera	Dysentery	Guinea Worm	Malaria	Measles	Meningitis	NNT	Plague	Typhoid Fever
Abim	95	0	6	0	10	0	1945	0	0	0	0	1
Adjumani	89	0	3	2(0)	29	0	3447(1)	0	0	0	0	2
Agago	88	0	1	0	39	0	4455	0	0	0	0	8
Alebtong	41	0	0	0	0	0	337	0	0	0	0	0
Amolatar	77	0	1	0	5	0	525	0	0	0	0	7
Amudat	88	0	0	0	6	0	756	0	0	0	0	4
Amuria	69	0	17(1)	0	6	0	4867	0	0	0	0	4
Amuru	78	0	0	0	13	0	3814	0	0	0	0	0
Apac	89	0	1	0	1	0	4149	0	0	0	0	0
Arua	78	0	13	0	27	0	4005(1)	1	0	0	0	41
Budaka	84	0	1	0	6	0	1594	0	0	0	0	6
Bududa	93	0	3	0	5	0	1570	0	0	0	0	7
Bugiri	32	0	1	0	3	0	1200	1	0	0	0	20
Buhweju	67	0	0	0	0	0	211	0	0	0	0	9
Buikwe	74	0	2	0	12	0	2161	1	0	0	0	26
Bukedea	18	0	1	0	1	0	228	0	0	0	0	0
Bukomansimbi	71	0	0	0	1	0	565	0	0	0	0	4
Bukwo	88	0	4	0	28	0	559	0	0	0	0	7
Bulambuli	68	0	1	0	0	0	890	0	0	0	0	0
Buliisa	91	0	0	0	3	0	675(1)	0	0	0	0	2
Bundibugyo	67	0	4	0	13	0	1671	0	0	0	0	17
Bushenyi	50	0	1	0	0	0	814	0	0	0	0	48
Busia	83	0	2	0	7	0	5315	1	0	0	0	48
Butaleja	88	0	2(1)	0	12	0	2301	0	0	0	0	6
Butambala	96	0	9	0	4	0	1091	1	1(1)	0	0	14
Buvuma	27	0	0	0	0	0	103	0	0	0	0	1
Buyende	77	0	1	0	2	0	1364	0	0	0	0	2
Dokolo	94	0	2	0	1	0	859	0	0	0	0	7
Gomba	74	0	3	0	2	0	706	0	0	0	0	0
Gulu	73	0	9(1)	0	48	0	9406	0	1	0	0	51
Hoima	52	0	7	0	39	1	3063(4)	11	0	0	0	65
Ibanda	45	0	3	0	1	0	2941(1)	0	0	0	0	1
Iganga	57	0	0	0	2	0	4089(4)	0	0	0	0	0
Isingiro	74	0	0	0	3	0	2237	1	0	0	0	25
Jinja	45	0	3	0	5	0	2846(3)	4	0	0	0	6
Kaabong	67	0	4	0	19	0	3171	0	0	0	0	9
Kabale	86	0	7	0	0	0	320	3	0	0	0	1
Kabarole	84	0	7	0	11	0	3238(2)	0	0	0	0	30
Kaberamaido	52	0	3	0	8	0	1511(1)	0	0	0	0	18
Kalangala	63	0	1	0	7	0	238	17	0	0	0	6
Kaliro	43	0	0	0	0	0	1511	0	0	0	0	8
Kalungu	33	0	0	0	0	0	546	1	0	0	0	0
Kampala	56	0	14	0	22	0	3229(2)	25	0	0	0	305(1)
Kamuli	57	0	8	0	8	0	5271(1)	2	0	0	0	14
Kamwenge	80	0	1	0	3	0	2133	2	0	0	0	2
Kanungu	69	0	4	0	1	0	632(4)	7	0	0	0	51

District	% of H/U reporting	AFP	Animal bite (Suspected Rabies)	Cholera	Dysentery	Guinea Worm	Malaria	Measles	Meningitis	NNT	Plague	Typhoid Fever
Kapchorwa	95	0	0	0	25	0	1476	0	0	0	0	0
Kasese	74	0	2	0	6	0	3227(2)	1	0	0	0	22
Katakwi	22	0	0	0	2	0	1338	0	0	0	0	0
Kayunga	76	0	5	0	16	0	2502	0	0	0	0	9
Kibaale	60	0	6	0	6	0	1124	3	0	0	0	59
Kiboga	63	0	0	0	2	0	557	2	0	0	0	11
Kibuku	80	0	2	0	6	0	893	2	0	0	0	0
Kiruhura	68	0	3	0	0	0	1904	14	0	0	0	0
Kiryandongo	81	0	3	0	3	0	1651	0	0	0	0	9
Kisoro	90	0	0	0	0	0	242	1	0	0	0	5
Kitgum	71	0	2	0	12	0	2934	0	0	0	0	22
Koboko	94	0	2	0	2	0	2115	0	0	0	0	1
Kole	92	0	3	0	0	0	2093	0	0	0	0	0
Kotido	26	0	0	0	24	0	1230	0	0	0	0	81
Kumi	64	0	4	0	1	0	2372	0	0	0	0	68
Kween	83	0	3	0	3	0	847	0	0	0	0	4
Kyankwanzi	92	0	0	0	1	0	1049	0	0	0	0	30
Kyegegwa	93	0	0	0	1	0	752(1)	11	0	0	0	0
Kyenjojo	77	0	6	0	2	0	2036	4(2)	0	0	0	13
Lamwo	81	0	2	0	1	0	4333	0	0	0	0	0
Lira	53	0	0	0	2	0	1049(2)	1	1	0	0	19
Luuka	45	0	0	0	1	0	1773	0	0	0	0	0
Luwero	70	0	1	0	6	0	1869(1)	10	0	0	0	60
Lwengo	26	1	0	0	2	0	525	1	0	0	0	10
Lyantonde	39	0	0	0	2	0	790	1	0	0	0	26
Manafwa	88	0	2	0	12	0	2086(1)	0	0	0	0	9
Maracha	100	0	7	0	2	0	1380(1)	0	0	0	0	20
Masaka	58	0	2	0	2	0	930	4	0	0	0	2
Masindi	73	0	7	0	3	0	1347	1	0	0	0	11
Mayuge	43	0	0	0	9	0	2206	0	0	0	0	4
Mbale	83	0	2	0	11	0	5768	0	0	0	0	4
Mbarara	83	0	10	0	3	0	1436	6	0	0	0	40
Mitooma	67	0	0	0	0	0	1305	0	0	0	0	1
Mityana	49	0	2	0	1	0	1577	3	0	0	0	1
Moroto	71	0	5	0	10	0	1744(1)	0	0	0	0	3
Moyo	98	0	3	0	22	0	3393	0	0	0	0	27
Mpigi	67	0	1	0	2	0	1039(1)	0	0	0	0	23
Mubende	21	0	3	0	5	0	420	3	0	0	0	24
Mukono	52	0	6	0	8	0	1483	1	0	0	0	3
Nakapiripirit	88	0	2	0	19	0	2131(1)	0	0	0	0	19
Nakaseke	68	0	6	0	11	0	1445	5	0	0	0	42
Nakasongola	26	0	0	0	6	0	996(1)	1	0	0	0	36
Namayingo	25	0	0	0	2	0	767	0	0	0	0	1
Namutumba	56	0	2	0	1	0	2429	0	0	0	0	2
Napak	79	0	9	0	5	0	929	0	0	0	0	0
Nebbi	77	0	10	0	19	0	2248(1)	0	0	0	0	6
Ngora	83	0	0	0	1	0	2128	0	0	0	0	0
Ntoroko	78	0	2	0	0	0	316	1	0	0	0	1
Ntungamo	52	0	7	0	0	0	1360(2)	0	0	0	0	0

District	% of H/U reporting	AFP	Animal bite (Suspected Rabies)	Cholera	Dysentery	Guinea Worm	Malaria	Measles	Meningitis	NNT	Plague	Typhoid Fever
Nwoya	90	0	3	0	2	0	1452(1)	0	0	0	0	0
Otuke	100	1	0	0	1	0	605	0	0	0	0	0
Oyam	82	1	7	0	12	0	2979(2)	0	0	0	0	3
Pader	53	0	5	0	10	0	2644	0	0	0	0	6
Pallisa	79	0	3	0	10	0	2876(4)	0	0	0	0	13
Rakai	30	0	2	0	3	0	1254	4	0	0	0	7
Rubirizi	71	0	0	0	2	0	457	0	0	0	0	17
Rukungiri	78	0	9	0	0	0	1439	10	0	0	0	6
Sembabule	54	0	0	0	2	0	1186	0	0	0	0	57
Serere	64	0	3	0	6	0	1866	0	0	0	0	0
Sheema	85	0	10	0	0	0	1145	2	0	0	0	3
Sironko	83	0	3	0	2	0	2239	0	0	0	0	0
Soroti	54	0	13	0	3	0	4002(2)	1	0	0	0	53
Tororo	72	0	9	0	10	0	3509	1	0	0	0	21
Wakiso	44	0	2	0	9	0	2814	5	0	0	0	44
Yumbe	100	0	2(1)	0	13	0	2881(3)	0	0	0	0	16
Zombo	100	0	2	0	7	0	874	0	0	0	0	0
National	65	3 (0)	355 (4)	2 (0)	785 (0)	0	214325 (54)	177 (2)	3 (1)	0	0	1857 (1)

Key: Yellow: 100% reporting, Green: 80-99% reporting, Red: Below 80% reporting

HU= Health Units, AFP=Acute Flaccid Paralysis, NNT=Neonatal Tetanus

Compiled by the Epidemiological Surveillance Division, Ministry of Health